

McMINNVILLE TOWN CENTER



LEASED!

ADDRESS

1421, 1461-1661 OR-99W | McMinnville, OR 97128

AVAILABLE SPACE

- 100% Leased

RENTAL RATE

Please call for details

TRAFFIC COUNTS

Pacific Hwy W (OR-99W) – 23,703 ADT ('22)

HIGHLIGHTS

- Strategically located 30,640 SF center anchored by Jimmy John's and Excell Fitness, a prominent local gym.
- Shadow anchored by Walmart, Safeway, WinCo Foods, Marshalls, Goodwill, Starbucks, Dutch Bros, Chase Bank and McDonalds.
- This high-visibility center was recently updated with re-stripe/reseal parking lot, clean/uniform tenant signage, new roof and HVAC systems.



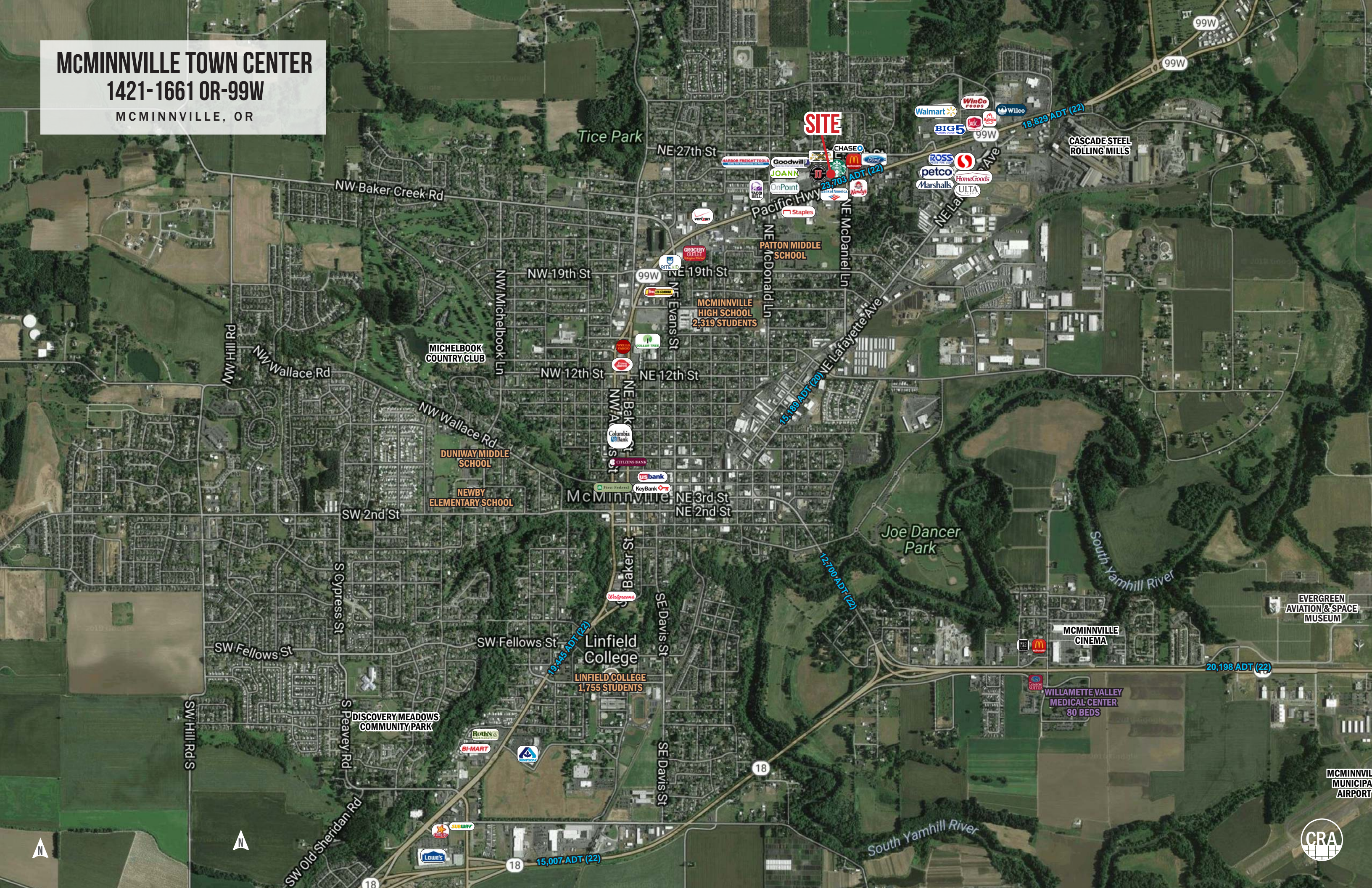
**COMMERCIAL
REALTY ADVISORS
NORTHWEST LLC**

Sam LeFeber 503.866.1956 | sam@cra-nw.com
Alex MacLean IV 503.866.6425 | alex4@cra-nw.com
Joe Casey 541.908.1708 | joe@cra-nw.com

503.274.0211
www.cra-nw.com



McMINNVILLE TOWN CENTER
1421-1661 OR-99W
MCMINNVILLE, OR



McMINNVILLE TOWN CENTER
1421-1661 OR-99W
MCMINNVILLE, OR

SUITE 1561
LEASED!

SUITE 1611
LEASED



ASIA EXPRESS

TAN REPUBLIC

EL MANGO LOCO

CHELY'S SALON

NAILS

ZAPATERIA LEON (SHOES)

ACCIDENT CARE

NUTRITION

NOAH'S BAKERY

JOANN

Goodwill
Industries International, Inc.



CHASE



BUDGET
BLINDS
Style and service for every budget.

DUTCH BROS

Pacific Hwy W

99W

black★rock
coffee bar

NE McDaniel Ln



NE McDaniel Ln



Map data ©2024 Google

McMINNVILLE TOWN CENTER

1421-1661 OR-99W

MCMINNVILLE, OR

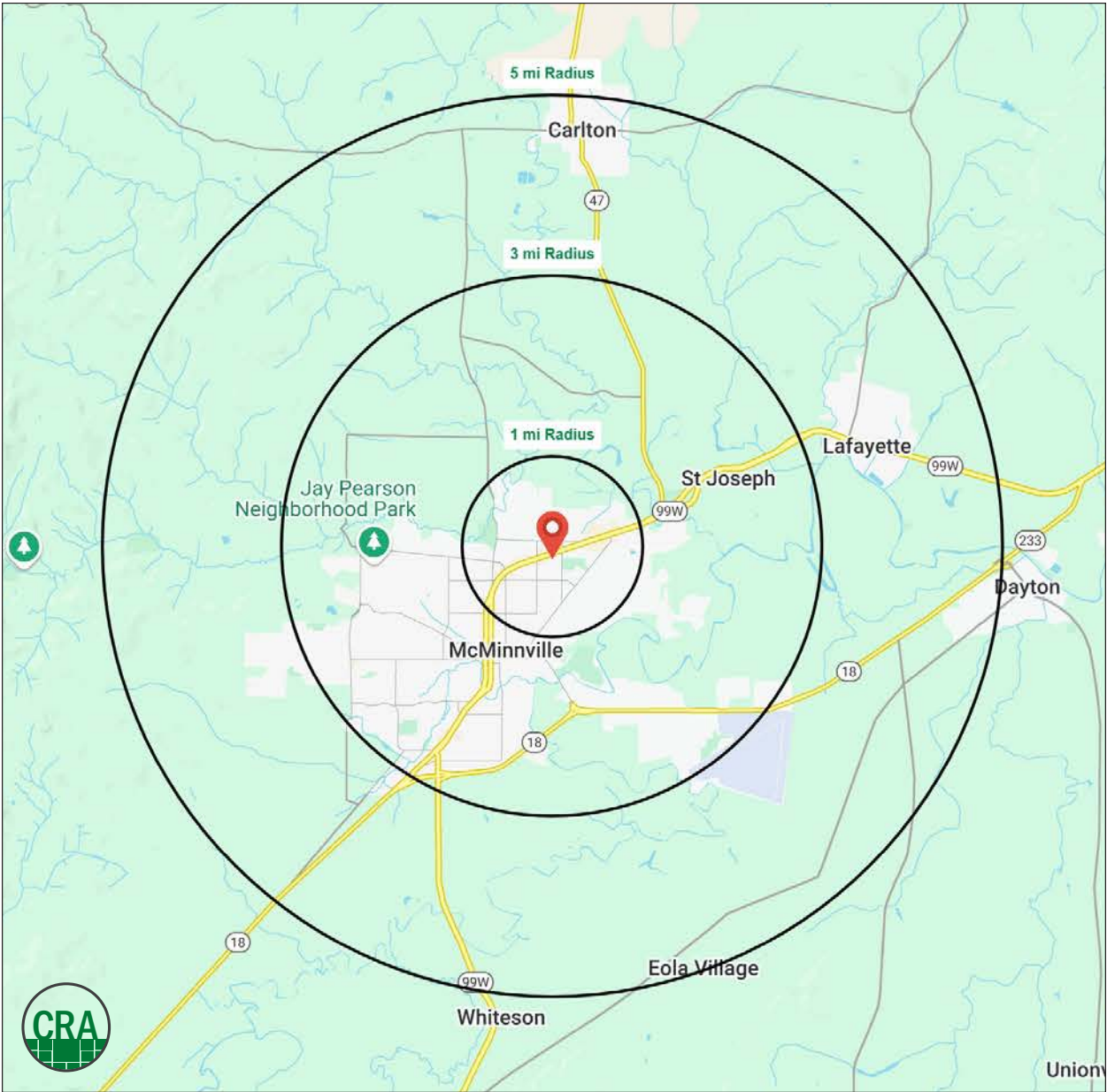
DEMOGRAPHIC SUMMARY

Source: Regis – SitesUSA (2024)	1 MILE	3 MILE	5 MILE
Estimated Population 2024	8,714	35,474	46,652
Projected Population 2029	9,160	36,219	47,632
Average HH Income	\$88,780	\$95,062	\$98,894
Median Home Value	\$427,244	\$396,696	\$404,333
Daytime Demographics 16+	8,590	28,688	34,566
Some College or Higher	60.1%	63.9%	63.5%

39.0

Median Age

1 MILE RADIUS



Summary Profile

2010-2020 Census, 2024 Estimates with 2029 Projections
Calculated using Weighted Block Centroid from Block Groups



Lat/Lon: 45.2271/-123.1836

McMinnville Town Center McMinnville, OR 97128	1 mi radius	3 mi radius	5 mi radius
Population			
2024 Estimated Population	8,714	35,474	46,652
2029 Projected Population	9,160	36,219	47,632
2020 Census Population	8,633	34,607	45,751
2010 Census Population	8,006	32,674	42,425
Projected Annual Growth 2024 to 2029	1.0%	0.4%	0.4%
Historical Annual Growth 2010 to 2024	0.6%	0.6%	0.7%
2024 Median Age	39.0	39.0	38.7
Households			
2024 Estimated Households	3,438	13,358	17,268
2029 Projected Households	3,643	13,735	17,749
2020 Census Households	3,218	12,618	16,422
2010 Census Households	2,998	11,882	15,192
Projected Annual Growth 2024 to 2029	1.2%	0.6%	0.6%
Historical Annual Growth 2010 to 2024	1.0%	0.9%	1.0%
Race and Ethnicity			
2024 Estimated White	78.9%	77.9%	78.4%
2024 Estimated Black or African American	1.0%	1.1%	1.0%
2024 Estimated Asian or Pacific Islander	1.8%	2.0%	2.0%
2024 Estimated American Indian or Native Alaskan	1.2%	1.1%	1.1%
2024 Estimated Other Races	17.2%	17.9%	17.5%
2024 Estimated Hispanic	20.5%	20.4%	19.9%
Income			
2024 Estimated Average Household Income	\$88,780	\$95,062	\$98,894
2024 Estimated Median Household Income	\$65,353	\$70,106	\$73,600
2024 Estimated Per Capita Income	\$35,374	\$36,252	\$36,964
Education (Age 25+)			
2024 Estimated Elementary (Grade Level 0 to 8)	4.5%	5.0%	5.2%
2024 Estimated Some High School (Grade Level 9 to 11)	8.0%	7.6%	7.2%
2024 Estimated High School Graduate	27.4%	23.5%	24.1%
2024 Estimated Some College	27.6%	28.0%	28.5%
2024 Estimated Associates Degree Only	8.5%	8.0%	7.9%
2024 Estimated Bachelors Degree Only	14.8%	16.9%	16.9%
2024 Estimated Graduate Degree	9.2%	10.9%	10.3%
Business			
2024 Estimated Total Businesses	526	1,739	2,044
2024 Estimated Total Employees	5,054	14,501	16,500
2024 Estimated Employee Population per Business	9.6	8.3	8.1
2024 Estimated Residential Population per Business	16.6	20.4	22.8

For more information, please contact:

SAM LEFEBER 503.866.1956 | sam@cra-nw.com

ALEX MACLEAN IV 503.866.6425 | alex4@cra-nw.com

JOE CASEY 541.908.1708 | joe@cra-nw.com



KNOWLEDGE

RELATIONSHIPS

EXPERIENCE



**COMMERCIAL
REALTY ADVISORS
NORTHWEST LLC**

Licensed brokers in Oregon & Washington

 15350 SW Sequoia Parkway, Suite 198 • Portland, Oregon 97224



www.cra-nw.com



503.274.0211

The information herein has been obtained from sources we deem reliable. We do not, however, guarantee its accuracy. All information should be verified prior to purchase/leasing. View the Real Estate Agency Pamphlet by visiting our website, www.cra-nw.com/home/agency-disclosure.html. CRA PRINTS WITH 30% POST-CONSUMER, RECYCLED-CONTENT MATERIAL.